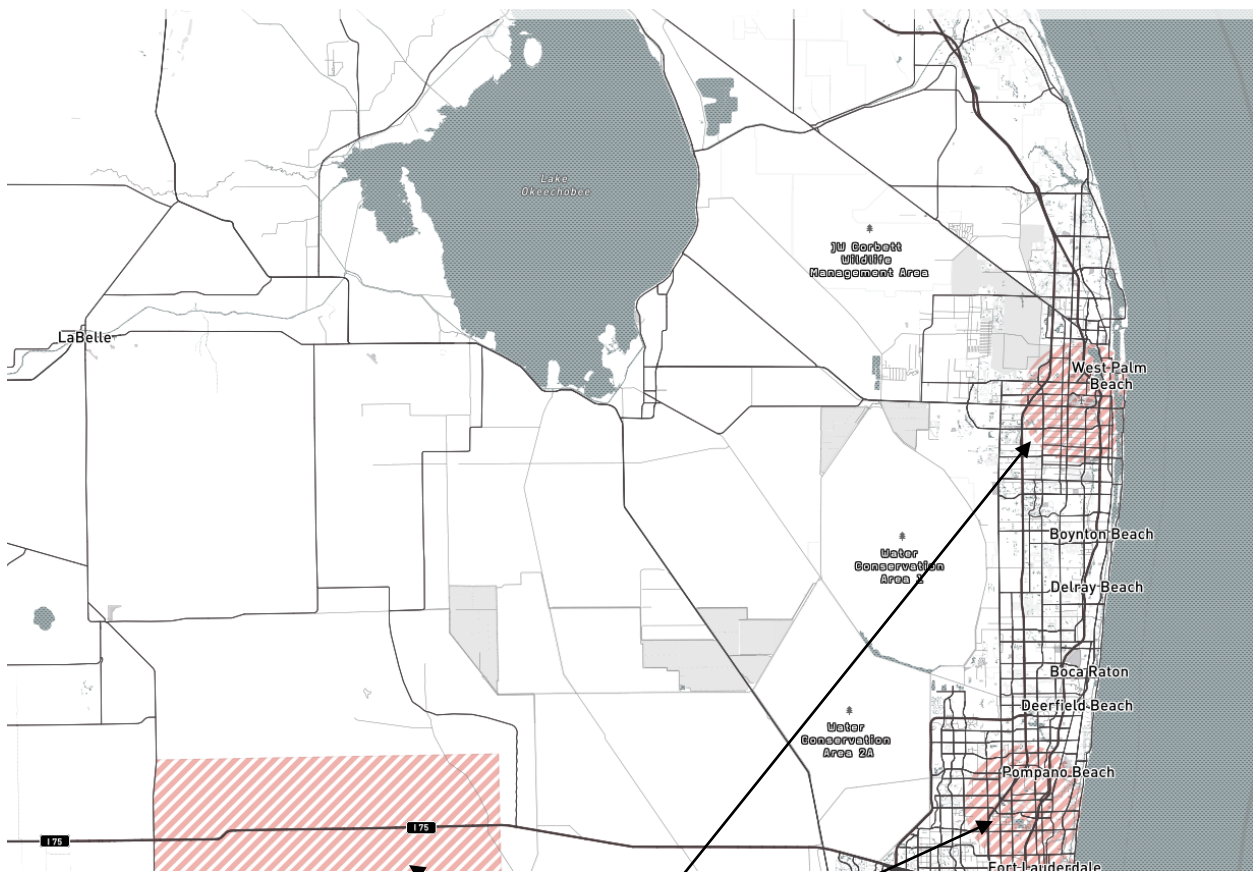


Palm Beach County Air Authority Contact information

FAA Contacts:

AirStrip:	Airport#	Contact:	Tel:
North Palm Beach County General Aviation E-mail: Miguel.Martinez@faa.gov	F45	Miguel Martinez	407-812-6331 ext. 123,
Palm Beach County Park E-mail: Miguel.Martinez@faa.gov	LNA	Miguel Martinez	407-812-6331 ext. 123,
Palm Beach International E-mail: Miguel.Martinez@faa.gov	PBI	Miguel Martinez	407-812-6331 ext. 123,



No Fly Zones in PB County

Palm Beach County Airport Contact information

Palm Beach International Airport (PBI)

1000 Palm Beach International Airport

West Palm Beach, FL 33406

(561) 471-7400

FAA Identifier: PBI

Lat/Long: 26-40-59.4000N / 080-05-44.1000W

26-40.990000N / 080-05.735000W

26.6831667 / -80.0955833

(estimated)

Elevation: 19.5 ft. / 5.9 m (surveyed)

Variation: 06W (2010)

From city: 3 miles W of WEST PALM BEACH, FL

Time zone: UTC -5 (UTC -4 during Daylight Saving Time)

Zip code: 33406

Airport Communications

UNICOM: 122.95

WX ASOS: 123.75 (561-683-2548)

PALM BEACH GROUND: 121.9 284.6

PALM BEACH TOWER: 119.1 257.8 118.75 384.6

PALM BEACH APPROACH: 125.2(SOUTH) 128.3(NORTH) 317.4(NORTH)
343.6(SOUTH)

PALM BEACH DEPARTURE: 125.2 128.3(NORTH) 343.6(SOUTH)

CLEARANCE DELIVERY: 121.6 284.6

CLASS C: 125.2(SOUTH) 128.3(NORTH) 343.6(SOUTH)
343.6(SOUTH)

CLASS C /S: 127.35(SOUTH)

CLASS C IC: 128.3(NORTH) 317.4(NORTH)

D-ATIS: 123.75

EMERG: 121.5 243.0

FINAL APCH: 125.0

WX AWOS-3 at LNA (5 nm S): 119.925 (561-964-0308)

WX AWOS-3 at F45 (12 nm NW): 119.975 (561-630-6932)

WX AWOS-3 at BCT (18 nm S): 121.125 (561-391-2696)

North Palm Beach County General Aviation Airport (F45)

<p>11600 Aviation Blvd., #13 West Palm Beach, FL 33412 f45@landmarkaviation.com Phone: 561.626.9799 Fax: 561.626.9644 Coordinates (estimated?) N26-50.7 - W080-13.3 Clearance 120.825 CTAF 123.075 ARINC 131.25 Departure 124.6 UNICOM 123.075 AWOS 119.975 FAA Identifier: F45 Lat/Long: 26-50-45.3000N / 080-13-20.4000W 26-50.755000N / 080-13.340000W 26.8459167 / -80.2223333 (estimated) Elevation: 22 ft. / 6.7 m (surveyed) Variation: 04W (1995) From city: 12 miles NW of WEST PALM BEACH, FL Time zone: UTC -5 (UTC -4 during DST)</p> <p>Airport Communications CTAF/UNICOM: 123.075 WX AWOS-3: 119.975 (561-630-6932) PALM BEACH APPROACH: 128.3 PALM BEACH DEPARTURE: 128.3 CLEARANCE DELIVERY: 120.825 WX ASOS at PBI (12 nm SE): 123.75 (561-683-2548) WX AWOS-3 at LNA (17 nm SE): 119.925 (561-964-0308)</p>	<p>Operated by: Landmark Aviation Corporate Headquarters 1500 CityWest Blvd. Suite 600 Houston, TX 77042 HR Fax: 713.996.8826 Headquarters Phone: 713.895.9243 Headquarters Toll-free: 888.362.6738</p> <p>Customer Service: Fax: 713.690.9553 Phone: 713.895.9243 x 101 MRO: 800.863.4119 Email: Aircraft Parts: 800.972.6819 Aircraft Management & Charter: 800.548.1978</p>
---	--

Lantana General Aviation Airport (LNA)

<p>Palm Beach County Park Airport (LNA) Address: 2633 Lantana Road #18 Lantana, FL 33462-2479 FAA Identifier: LNA Lat/Long: 26-35-35.0000N / 080-05-06.2326W 26-35.583333N / 080-05.103877W 26.5930556 / -80.0850646 (estimated) Elevation: 14.2 ft. / 4.3 m (surveyed) Variation: 06W (2010) From city: 6 miles S of WPB, FL Time zone: UTC -5 (UTC -4 during DST)</p>	<p>Operated By: Galaxy Aviation Address: 2633 Lantana Road #18 Lake Worth, FL 33462-2479 United States of America Telephone: 561-656-9815 Fax: 561-283-1006 Email: LNAFBO@fboassociates.com</p> <p>There is no air traffic control tower and the common air traffic advisory frequency is 122.70</p>
---	--

Belle Glade State Municipal Airport (X10)

FAA Identifier: X10

Lat/Long: 26-41-53.9000N / 080-39-38.9000W
26-41.898333N / 080-39.648333W
26.6983056 / -80.6608056
(estimated)
Elevation: 14 ft. / 4 m (estimated)
Variation: 03W (1985)
From city: 1 mile NE of BELLE GLADE, FL
Time zone: UTC -5 (UTC -4 during Daylight Saving Time)
Zip code: 33430

Airport Communications CTAF: 122.9

Nearby radio navigation aids

VOR radial/distance	VOR name	Freq	Var
PHK r162/5.3	PAHOKEE VORTAC	115.40	00E
PBI r275/30.8	PALM BEACH VORTAC	115.70	03W
LBV r100/39.9	LA BELLE VORTAC	110.40	01E

Boca Raton Airport (BCT)

3701 FAU Blvd. Suite 205

Boca Raton, FL 33431

(561) 391-2202

FAA Identifier: BCT

Lat/Long: 26-22-42.6000N / 080-06-27.7000W

26-22.710000N / 080-06.461667W

26.3785000 / -80.1076944

(estimated)

Elevation: 13 ft. / 4.0 m (surveyed)

Variation: 05W (2000)

From city: 2 miles NW of BOCA RATON, FL

Time zone: UTC -5 (UTC -4 during Daylight Saving Time)

Zip code: 33431

Airport Communications

CTAF: 118.425

WX AWOS-3: 121.125 (561-391-2696)

BOCA RATON GROUND: 121.8 [0700-2300]

BOCA RATON TOWER: 118.425 [0700-2300]

PALM BEACH APPROACH: 125.2

PALM BEACH DEPARTURE: 125.2

CLEARANCE DELIVERY: 121.8 127.35(WHEN BCT ATCT CLSD)

WX ASOS at PMP (8 nm S): PHONE 954-783-3720

WX ASOS at FXE (11 nm S): PHONE 954-772-2537

WX AWOS-3 at LNA (13 nm N): 119.925 (561-964-0308)

WX ASOS at PBI (18 nm N): 123.75 (561-683-2548)

WX ASOS at FLL (19 nm S): PHONE 954-359-7857

West Delray Regional Park Radio Control Airstrip

Palm Beach Radio Control Flyers Airstrip

10875 Atlantic Avenue, Delray Beach, Florida 33436 A Palm Beach County Park

In Partnership with the Palm Beach Radio Control Association, Inc.

<http://www.palmbeachrc.com/> e-mail: dougpbrc@gmail.com

Dyer Park Radio Control Airstrip (Riviera Beach)

Dyer Park 7301 Haverhill Road, West Palm Beach fl, 33412 The airstrip is in the SW corner of the park. If you need info, call Steve Rowe, RC Bush Pilots Club President at (561) 315-4164.